

NITECORE®



E4K 4400 LUMENS

NEXT GENERATION

21700 COMPACT EDC FLASHLIGHT

E4K 4400
LUMENS

NEXT GENERATION

21700 COMPACT EDC FLASHLIGHT

NITECORE

2

4400 Lumens

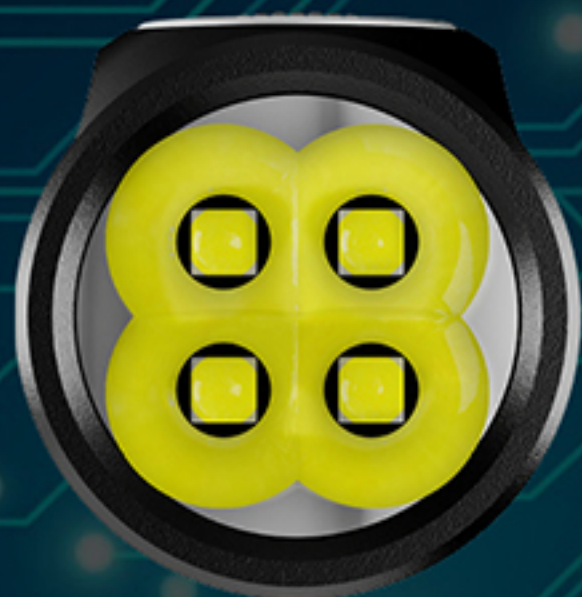
Blazing Output from a Palm Sized Body

Equipped with 4 x CREE XP-L2 V6 LEDs with a lifespan of 50,000 hours, the E4K is able to emit a max output of 4,400 lumens, a max peak beam intensity of 11,100cd and a max throw of 211 meters, ideal for EDC (Everyday Carry), trekking, camping and more.



Note: The LED lifespan data is from the CREE official website. The stated data is measured in accordance with the international flashlight testing standards ANSI/PLATO FL 1-2019, using 1 x 21700 Li-ion battery (5,000mAh) with a discharge current over 15A under laboratory conditions. The data may vary in real world use due to different battery usage or environmental conditions.

This picture is the intellectual property of Nitecore. All rights to take legal action are reserved.



Independently Controlled Quadruple LEDs

Powered by a constant current circuit to provide
a durable usage with guaranteed safety.

NITECORE®

4

E4K 4400
LUMENS

NEXT GENERATION

21700 COMPACT EDC FLASHLIGHT

Head Diameter: 28.6mm (1.13")



Length: 117.56mm (4.63")

Weight: **80g** (2.82oz)



Tail Diameter: 28.1mm (1.11")

Ultra Compact and Lightweight

Provides convenient and flexible usage

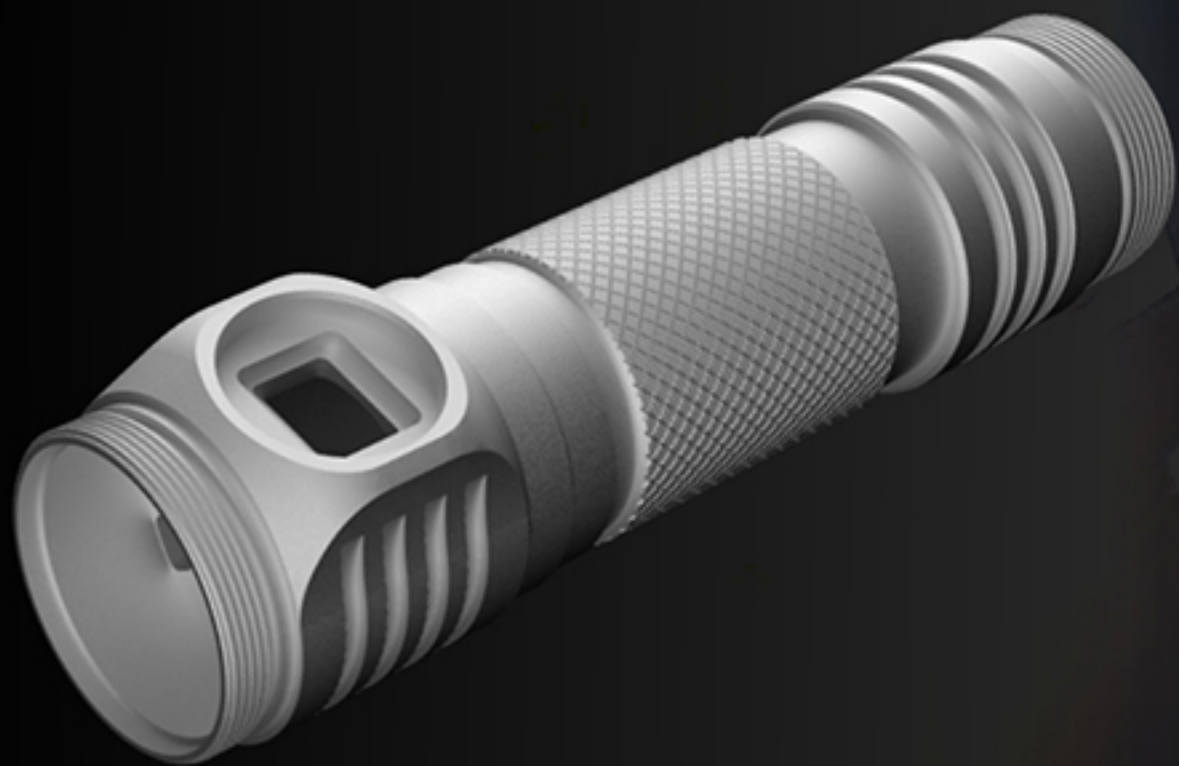
E4K 4400
LUMENS

NEXT GENERATION

21700 COMPACT EDC FLASHLIGHT

5

NITECORE®



CNC Machined Unibody Design

The E4K is constructed with a CNC machined unibody design, featuring lightweight, solidity and excellent heat dissipation

NITECORE®

7

E4K 4400
LUMENS

NEXT GENERATION

21700 COMPACT EDC FLASHLIGHT



USB-C Charging Port



* CR123 Battery Magazine Included
For CR123/RCR123 Batteries

NL2150HPR Battery (5,000mAh) Included

Recommended to be powered by 1 × 21700 battery (discharge current over 15A)
while compatible with 2 × CR123 / RCR123 batteries

E4K 4400
LUMENS

NEXT GENERATION

21700 COMPACT EDC FLASHLIGHT

8

NITECORE®

700 Hours Ultra Long Runtime

Consistent Usage of **30** Days on ULTRALOW

* The stated data is measured in accordance with the international flashlight testing standards ANSI/PLATO FL 1-2019, using 1 x 21700 Li-ion battery (5,000mAh) with a discharge current over 15A under laboratory conditions. The data may vary in real world use due to different battery usage or environmental conditions.

This picture is the intellectual property of Nitecore. All rights to take legal action are reserved.

E4K 4400
LUMENS

NEXT GENERATION

21700 COMPACT EDC FLASHLIGHT

9

NITECORE®



One Hand Operable Side Switch

Specially designed for outdoor applications, the side switch has a wearproof silicone cover which is friendly for glove users.

NITECORE®

10

E4K 4400
LUMENS

NEXT GENERATION

21700 COMPACT EDC FLASHLIGHT

User-friendly Interface



Hold: Turn on / Brightness Adjustment



Short Press: Power Indication



Double Press: Directly to ULTRALOW



Triple Press: Directly to TURBO / STROBE



E4K 4400
LUMENS

NEXT GENERATION

21700 COMPACT EDC FLASHLIGHT

11

NITECORE®

Dual User Modes Available



Tactical Mode:

Offering direct access to STROBE
by triple pressing the side switch in the standby status



Daily Mode:

Offering direct access to TURBO
by triple pressing the side switch in the standby status

E4K 4400
LUMENS

NEXT GENERATION

21700 COMPACT EDC FLASHLIGHT

12

NITECORE®

5 Brightness Levels



TURBO



HIGH



MID



LOW



ULTRALOW

3 Special Modes



STROBE



BEACON



SOS

E4K 4400
LUMENS

NEXT GENERATION

21700 COMPACT EDC FLASHLIGHT

13

NITECORE®



Mode Memory

When reactivated, the flashlight will automatically access the previous memorized brightness level.

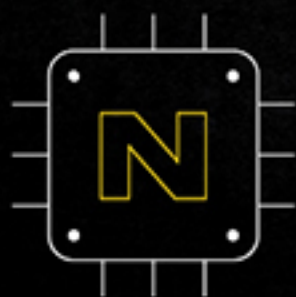
NITECORE®

14

E4K 4400
LUMENS

NEXT GENERATION

21700 COMPACT EDC FLASHLIGHT



ATR (Advanced Temperature Regulation)

(Patent No. ZL201510534543.6)

The integrated ATR technology regulates the output of the E4K according to the working condition and ambient environment to maintain the optimal performance.

E4K 4400
LUMENS

NEXT GENERATION

21700 COMPACT EDC FLASHLIGHT

16

NITECORE®

Exquisite Design of Simplicity



E4K 4400
LUMENS

NEXT GENERATION

21700 COMPACT EDC FLASHLIGHT

18

NITECORE®



IP68 Rated

2 Meters Submersible

1 Meter Impact Resistant

All Weather Applicable

E4K 4400
LUMENS

NEXT GENERATION

21700 COMPACT EDC FLASHLIGHT

NITECORE®

Packing List

- E4K
- NITECORE 21700 Rechargeable Li-ion Battery (NL2150HPR 5,000mAh)
- USB-C Charging Cable
- CR123 Battery Magazine
- Clip
- Holster
- Lanyard
- Spare O-ring



E4K 4400 LUMENS

NEXT GENERATION

21700 COMPACT EDC FLASHLIGHT

NITECORE®

E4K Technical Data

FL1 STANDARD	TURBO	HIGH	MID	LOW	ULTRALOW	STROBE	SOS	BEACON
	4,400 Lumens	1,050 Lumens	320 Lumens	50 Lumens	2 Lumens	4,400 Lumens	4,400 Lumens	4,400 Lumens
	* 30min	3h 15min	7h 30min	45h	700h	---	---	---
	211m	105m	57m	21m	3m	---	---	---
	11,100cd	2,800cd	810cd	110cd	3cd	---	---	---
	1 m (Impact Resistance)							
	IP68, 2m (Waterproof and Submersible)							

Note: The stated data is measured in accordance with the international flashlight testing standards ANSI/PLATO FL 1-2019, using 1 x 21700 Li-ion battery (5,000mAh) under laboratory conditions. The data may vary in real world use due to different battery usage or environmental conditions.

* The runtime for TURBO mode is tested without the temperature regulation.

* TURBO Availability: The TURBO level is only accessible when using a 21700 rechargeable Li-ion battery with an output over 15A. It is inaccessible when using CR123/RCR123 batteries.



Features

- Utilizes 4 x CREE XP-L2 V6 LEDs with a max output of 4,400 lumens
- An optical system combined with crystal coating and "Precision Digital Optics Technology" (PDOT)
- Maximum peak beam intensity of 11,100cd and maximum throw of 211 meters
- Highly efficient constant current circuit provides a stable output for up to 700 hours
- One side switch specially designed for outdoor applications controls 5 brightness levels and 3 special modes
- STROBE Mode uses randomly changing frequencies for stronger dizzying effects
- A power indicator beneath the side switch indicates the remaining battery power (Patent No. ZL201220057767.4)
- The power indicator can display the battery voltage ($\pm 0.1V$)
- NITECORE 21700 rechargeable Li-ion battery (NL2150HPR 5,000mAh) included
- Incorporated Advanced Temperature Regulation (ATR) module (Patent No. ZL201510534543.6)
- Electronic reverse polarity protection
- Optical lenses with double-sided scratch resistant coating
- Constructed from aero grade aluminum alloy
- HA III military grade hard-anodized finish
- Waterproof in accordance with IP68 (2 meters submersible)
- Impact resistant to 1 meter
- Tail stand capability

